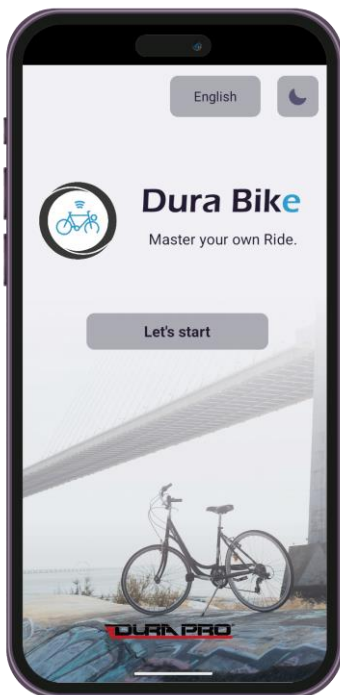






Dura Bike

Bike with APP & Accessories



Smarter Driving Starts with Durapro

Table Contents

01	 Dura Control	P. 02-05
02	 Dura TPMS	P. 06-08
03	Accessories	P. 09-13



01



Dura Control

What is Dura Control ?



Dura Control is a mobile application designed to seamlessly integrate with our driving system (motor, controller & battery), offering users real-time electric bike data and an enhanced riding experience.

Driving system (Motor, Controller & Battery)

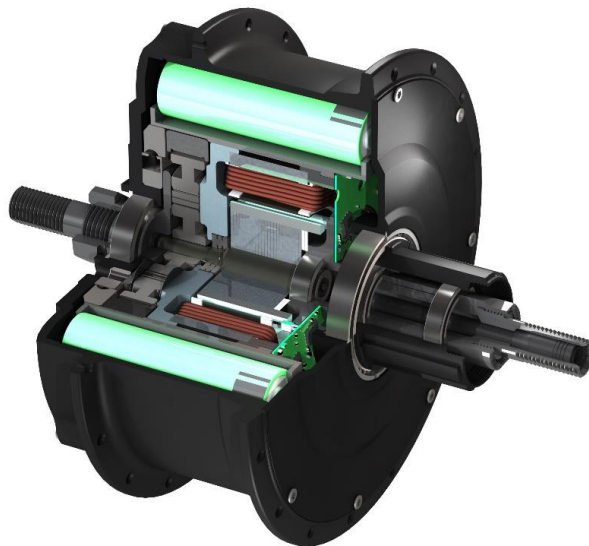
Built-in battery, controller, sensor, communication module, etc.

Transform your bike into an electric bike with ease and affordability! Simply swap out the rear wheel and install our driving system, and you'll breeze through daily commutes or enjoy leisurely rides like never before.



Features:

1. Driving system with a built-in 210Wh battery, built-in controller and sensor.
2. Built-in Bluetooth module, wireless connection, no cables required, easy to install.
3. Built-in dynamic torque sensing system provides a better riding experience while ensuring riding safety.
4. Built-in slope sensing system, when going uphill, the motor will automatically increase the torque without pedaling hard.
5. The working efficiency is as high as 90%, which effectively reduces heat loss and increases driving range.
6. The integration is very high, but the weight is only 2.7kg.
7. Suitable for 14~29 inches rear tires. An ordinary bicycle can be turned into an electric bicycle by replacing the rear wheel with a driving system .



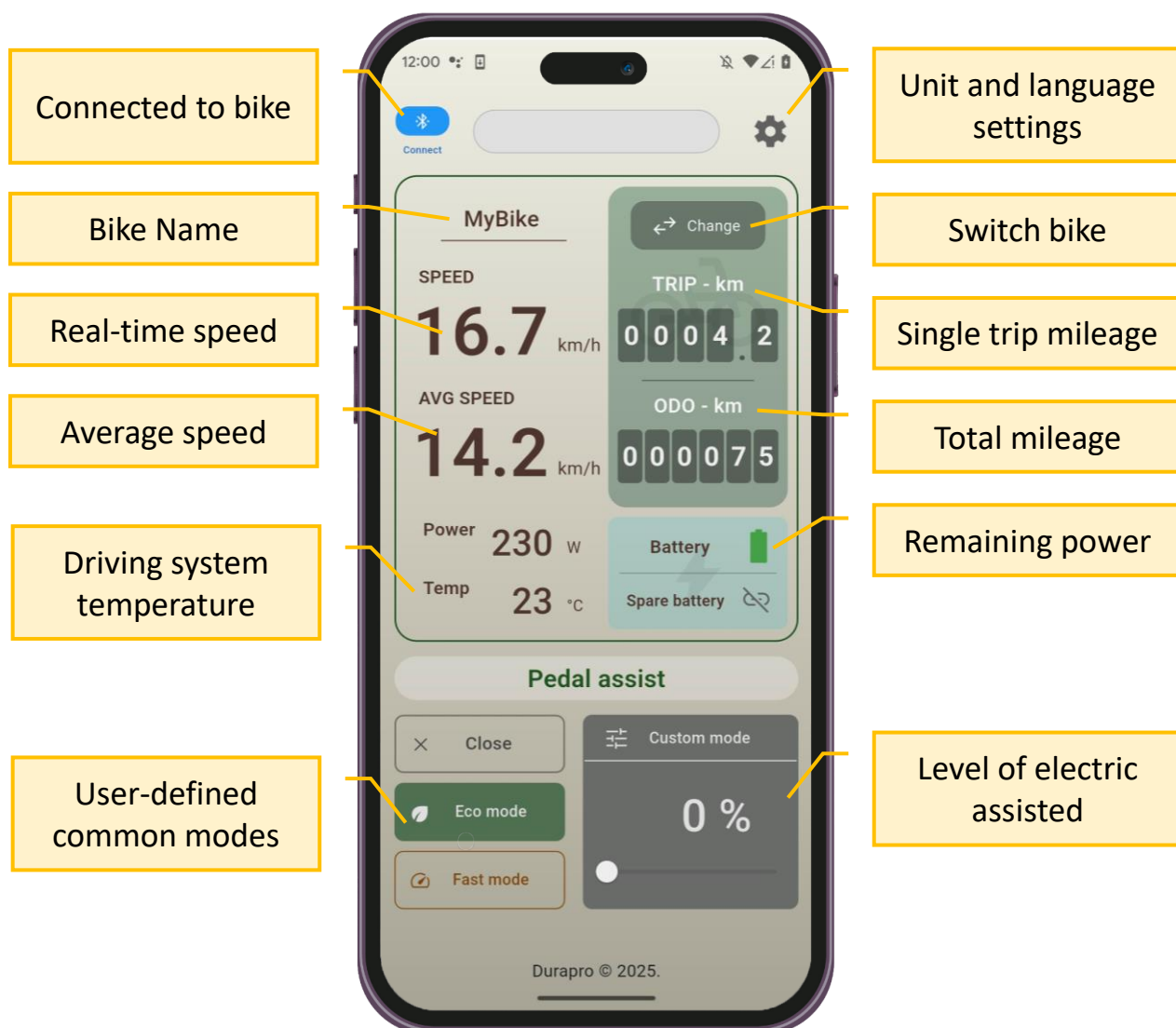
Specification sheet:

Diameter	143 ± 1mm
Opening	135 ± 2mm
Brake type	Disc brake/V brake
Outlet position	Wireless control, no cables required
Flywheel type	Card fly or spin fly
Freehub Type	1-12 speed
Number of spoke holes	20H/ 24H/ 28H/ 32H/ 36H
Spoke Specifications	14g
Controller	built-in
Sensor	built-in
Battery	Built-in 7Ah lithium battery
Rated power	250W
Maximum power	350W
Maximum Torque	30N·m
Rated voltage	30V
Rated current	8.3A
Reduction ratio	1 : 13.5
Gradeability	> 20%
Efficiency	> 90 %
Rotating speed	160-260RPM
Applicable wheel diameter	14-29 inches
Color	black silver
Working volume	< 50dB
Operating temperature	-20-45 °C
Storage temperature	-20-45 °C
Waterproof level	IP65
Weight	2.7KGS



Dura Control App

Control the driving system effortlessly through the app, adjusting the level of electric assistance to suit your ride. It also shows real-time speed, temperature, and mileage, keeping you fully informed as you ride!



Dura Control bike information display

02



Dura TPMS

What is Dura TPMS ?



Dura TPMS is a mobile application designed to work in conjunction with our TPMS (tire pressure management system), providing real-time tire monitoring to enhance driving safety.

TPMS (Tire Pressure Management System)

Bluetooth wireless transmission, instant information on tire pressure.

Features:

1. Easy to install.
2. Check real-time tire pressure and temperature.
3. Dura TPMS APP will display a warning when tire pressure is abnormal.



Specification sheet:

Pressure measuring range	0~100psi (0-7 bar)
Pressure tolerance range	± 0.1 bar
Temperature tolerance range	± 2 degree
Working current	22 mA
Sleep current	± 0.3 µA
Working voltage	2.1~3.2 V
Working temperature	-20°C~80 °C
Built-in battery	120 mAh
Bluetooth transmitting distance	< 10 meters



Dura TPMS

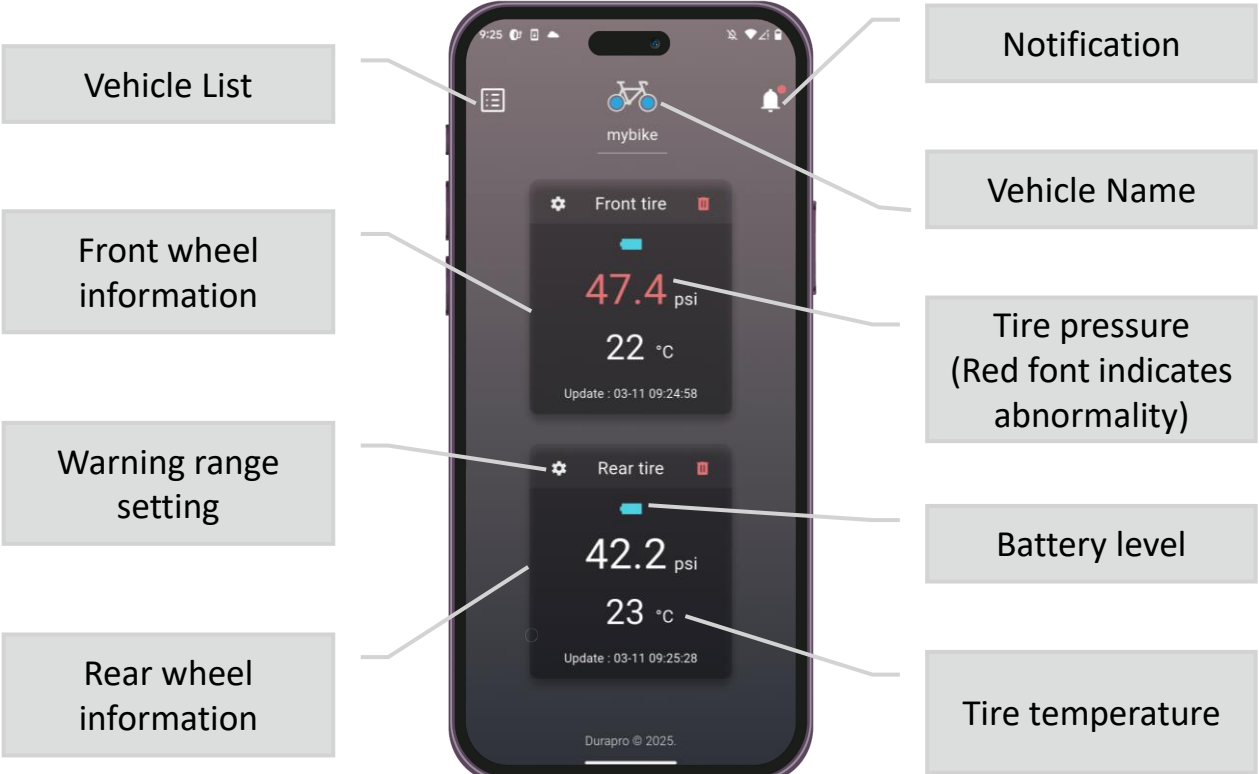


Dura TPMS is an app designed to monitor tire pressure and enhance driving safety. By ensuring proper tire pressure, it improves vehicle stability and extends tire life. Compatible with sensors for 2-wheel, 4-wheel, and 16-wheel vehicles, it's perfect for multi-vehicle households or commercial fleets.

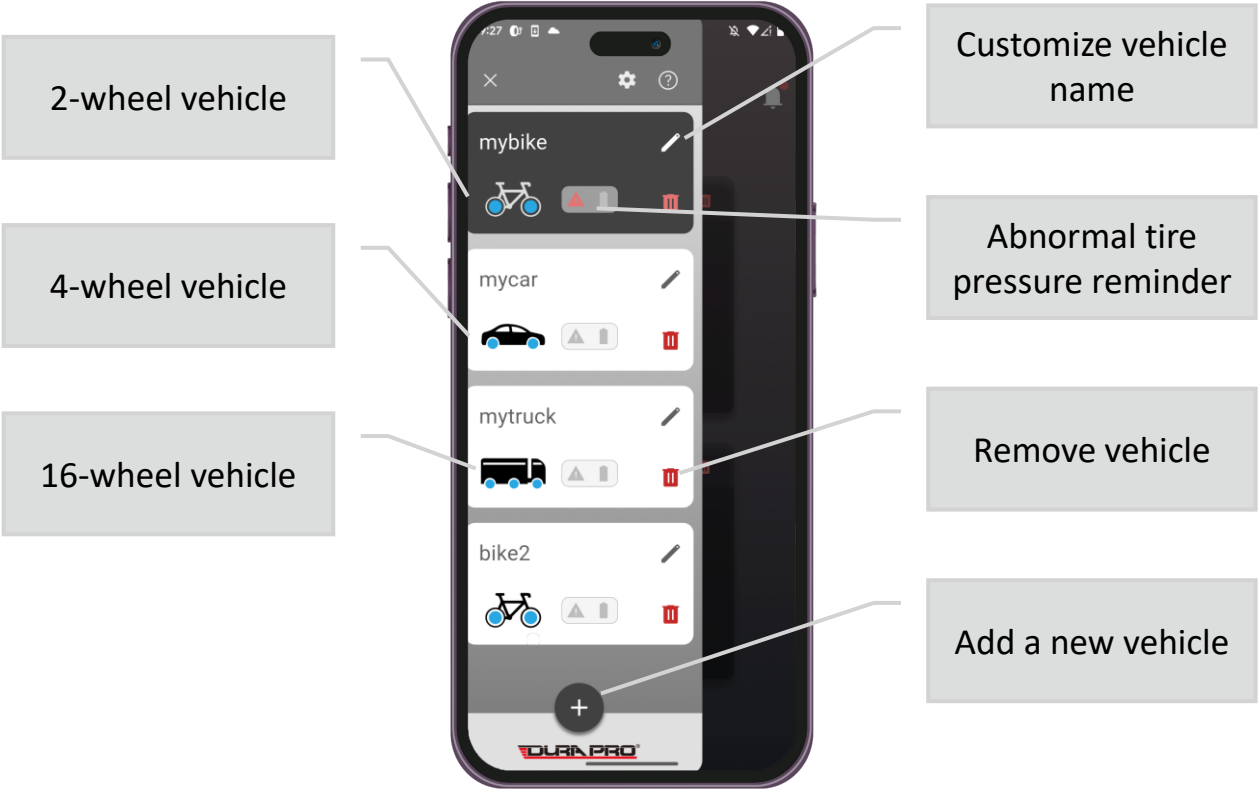
Who is suitable for Dura TPMS?

- 1. Commercial fleet managers.
- 2. Multi-car families.
- 3. Bicycle enthusiasts.
- 4. Technology enthusiasts.

Driving with Confidence, Monitor with Ease.



Dura TPMS 2-wheel tire pressure display.



Dura TPMS Vehicle List.

03

Accessories

Bike light

Brake sensing/Intelligent start-stop/vibration, light sensing/COB large aperture.

Features:

1. A powerful guarantee for night riding safety.
2. Charging via USB port.
3. Simple appearance.
4. Six lighting modes.
5. Two ways of installation.



Specification sheet:



Function	Long press switch ON/OFF
Brightness	60LM
Click switch	Always on/ breathing flash/ comet flash/slow flash/mixed flash/ECO flash
Lighting mode	6 type
Battery life	Highlight 5h/breathing flash 9.3h/comet flash 10.3h/slow flash 9.2h/Mixed flash 11.6h/ECO flash 26.5h
Lamp beads	COB large aperture
Material	Aluminum alloy/ plastic
Size	43x40mm
Weight	43g
Battery	420mAh
Color	Black

Backup Battery

Portable charger for electric bikes.

Features:

1. Support motor system and display real-time battery power in the app.
2. Water bottle shaped appearance, easy to install on the bicycle water bottle holder.
3. Small size, light weight, easy to disassemble.
4. Built-in BMS.
5. Adopt imported Panasonic cells.



Specification sheet:

Specification	BI3607	BI3611	BI3615
Rated voltage(V)	36	36	36
Rated capacity(Ah)	7	10.5	15
Voltage range(V)	28-42	28-42	28-42
Battery capacity(Wh)	252	378	540
Maximum current(A)	20	20/40	40
Charge current(A)	3	3	3
Charge time(h)	2.5	3.5	5
Working temperature(°C)	-20~60	-20~60	-20~60
Cycle life(times)	≥1000	≥1000	≥1000
Waterproof	IP67	IP67	IP67
Diameter(mm)	70x76	70x76	70x88
Height(mm)	225	290	310
Weight(kg)	1.2	1.8	2.5

Bike Lock

Bluetooth control, unlock via APP.

Features:

1. Unlock via APP, lock by hand.
2. Easy to install.
3. Charging via USB port.
4. With solar charging.
5. Anti-theft alert.
6. Lock and unlock records.



Specification sheet:

Size	Length: 159mm; width:136mm; height:36mm
Color	Black
Material	Surface case: PA66+FG30% Bottom case: Aluminum alloy
Standby time	>60 days (Solar charging not included)
DC charging input	DC 5V / 500 mA
Charging status	The red light on: charging; The red light off: fully charged.
Built-in battery	700 mAh / 3.7 V
Mounting hole spacing	78 mm
Hose clamp size	20-40 mm
Working temperature	-40°C~80 °C
Working humidity	10~95%
Waterproof level	IP67
Weight	450 g
Bluetooth version	BLE 4.0
Bluetooth transmitting distance	< 10 meters

Bike Lock

Bluetooth control, unlock via APP.

Features:

- 1. Unlock via APP, lock by hand.
- 2. Easy to install.
- 3. Charging via USB port.
- 4. With solar charging.
- 5. Lock and unlock records.



Specification sheet:

Size	Length: 99mm; width:85mm; height:25mm Steel rope diameter: 6mm; length:1000mm
Color	Black
Material	Surface case: ABS+PC Bottom case: Aluminum alloy
DC charging input	DC 5V / 1A
Charging status	The red light on: charging; The red light off: fully charged.
Built-in battery	700 mAh / 3.7 V
Working temperature	-10°C~60 °C
Waterproof level	IP66
Weight	350 g
Bluetooth version	BLE 4.0
Bluetooth transmitting distance	< 10 meters

Bike First Aid Kit

The size and contents of the bag can be customized.

Features:

1. Compact and convenient.
2. Red fabric pouch.
3. Versatile for all cyclists.
4. Basic first aid tools.
5. Customized content.





Dura Bikee

DURA PRO®

益昇國際智慧

International

i-Tech

Website

<https://www.dura-pro.com>

Contact

TEL: +886-4-2293-6691

FAX: +886-4-2297-6503

Address

13F-1, No. 81, Section 4, Wen
Shin Road, Taichung, TAIWAN
